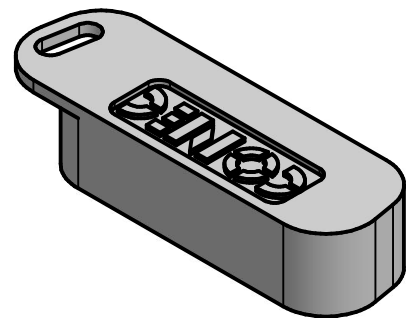


(b)
 TO PREVENT DAMAGE AT LOW TEMPERATURES NO
 IMPACT OR EXTREM MECHANICAL LOAD SHOULD
 APPLIED TO THE CAP:
 MECHANICAL LOAD SHOULD BE APPLIED ABOVE 0°C

POS.	A	B	C	Part No.
9	22,9	16,5	7,9	160X10449X
15	31,4	24,7	7,7	160X10459X
25	44,5	38,0	7,9	160X10469X
37	60,6	54,5	7,7	160X10479X



(b)
 NOTES:
 1. MATERIAL: TPE, BLACK
 2. TEMPERATURE RANGE: -30°C - +80°C

Directive 2002/95/EC
 „RoHS“
 Compliant

THIS DRAWING MAY NOT BE COPIED OR
 REPRODUCED IN ANY WAY, AND MAY NOT
 BE PASSED ON TO A THIRD PARTY WITHOUT
 WRITTEN PERMISSION.
 OWNERSHIP AND COPYRIGHT OF CONEC GmbH

DO NOT ALTER CAD DRAWING BY HAND

				tolerance DIN 16901 - 150	dim. in mm
				date	name
				drawn 18.07.1995	Barcinski
				appd. 18.07.1995	Mickenbecker
				norm	
5 x c	Ä3569	05.02.2010	K.H.	d-old	
3 x b	Ä2150	17.01.2005	Lehmen		
a	Origin				
rev.	description	date	name		

scale:	2:1	
material:	(b)	SEE NOTES
title:	DUST CAP for socket connector 9 - 37 pos.	
dwg no:	Inventor 10 (c)	DIN-A4
	16V1M5A	sh: 1
part no:	SEE TABLE	